

# QD Bushing Sheaves

Cast Iron Sheaves - **Heavy Duty**

Bushed, **Twelve Groove**

Order part number size

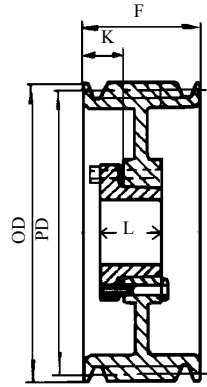
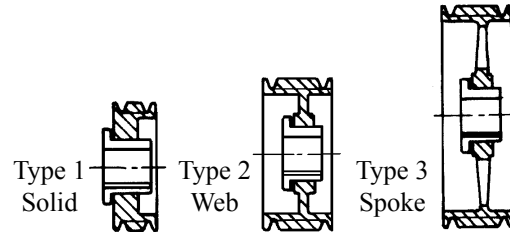
Example: 12/8V1250M

**For 8V Belts**

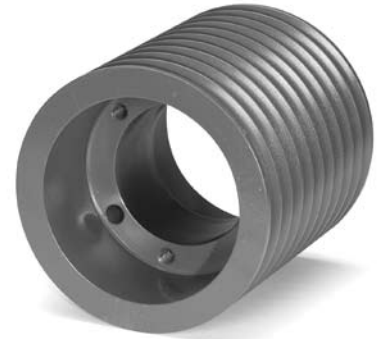
See pages 59, 60, 66 & 67.

Order QD bushings separately.

**Stock Bushings Located on Pages 36-37.**



Type A



Diameters		12 Groove F = 13 7/8					
O.D.	P.D.	Part No.	Bush	Type	K	L	WT.
12.50	12.30	12/8V1250M	M	A-1	3 15/16	5 3/16	198.4
13.20	13.00	12/8V1320M	M	A-1	3 15/16	5 3/16	220.5
14.00	13.80	12/8V1400M	M	A-1	3 15/16	5 3/16	242.5
15.00	14.80	12/8V1500M	M	A-1	3 15/16	5 3/16	275.6
16.00	15.80	12/8V1600M	M	A-1	3 15/16	5 3/16	313.1
17.00	16.80	12/8V1700M	M	A-1	3 15/16	5 3/16	348.3
18.00	17.80	12/8V1800M	M	A-2	3 15/16	5 3/16	352.7
19.00	18.80	12/8V1900N	N	A-2	2 1/16	6 1/4	396.8
20.00	19.80	12/8V2000N	N	A-2	2 1/16	6 1/4	421.1
21.20	21.00	12/8V2120N	N	A-2	2 1/16	6 1/4	452.0
22.40	22.20	12/8V2240N	N	A-2	2 1/16	6 1/4	485.0
24.80	24.60	12/8V2480N	N	A-2	2 1/16	6 1/4	515.9
30.00	29.80	12/8V3000P	P	A-3	2 3/8	7 1/4	646.0
35.50	35.30	12/8V3550P	P	A-3	2 3/8	7 1/4	754.0
40.00	39.80	12/8V4000P	P	A-3	2 3/8	7 1/4	870.9
44.50	44.30	12/8V4450P	P	A-3	2 3/8	7 1/4	992.1
53.00	52.80	12/8V5300W	W	A-3	2 5/8	9	1410.0

**Note:** Cast iron sheaves may not exceed 6500 FPM.  
This speed **DOES NOT** specify if dynamic balancing (2 plane) is required. Contact customer service to verify whether dynamic balancing is required.

Severe Duty Ductile Iron Sheaves (Max Rim Speed = 8,000FPM) are available upon request.