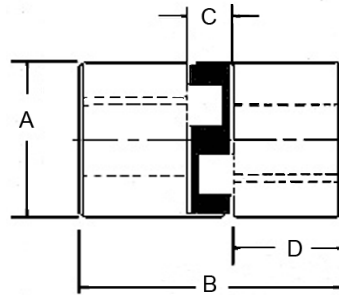
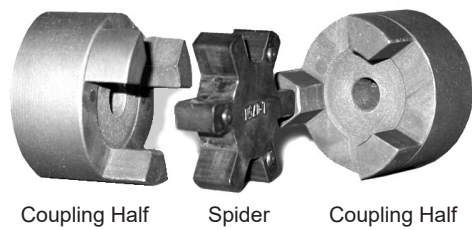
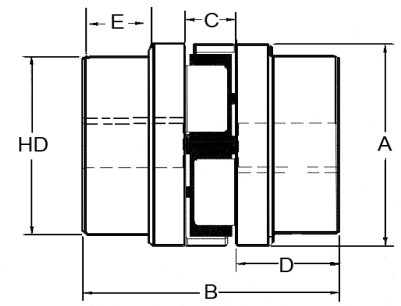


Jaw Coupling Dimensions



TYPE 1



TYPE 2

Jaw Coupling - Dimensions (inches)

Coupling	Type	Outside Dia	Overall Length	Distance Between Flanges	Length Thru Bore	E	HD	Wt. Lbs	Set Screw Thread Size	Set Screw Qty.
		A	B	C	D					
L035	1	0.625	0.813	0.281	0.266	-	-	0.10	#6-32UNCX1/8"	1
L050	1	1.063	1.721	0.470	0.625	-	-	0.29	1/4"-20UNCX3/16"	1
L070	1	1.375	2.000	0.500	0.770	-	-	0.56	1/4"-20UNCX1/4"	2
L075	1	1.750	2.126	0.480	0.820	-	-	0.95	1/4"-20UNCX3/8"	2
L090	1	2.125	2.146	0.490	0.841	-	-	1.45	1/4"-20UNCX3/8"	2
L095	1	2.125	2.520	0.455	1.020	-	-	1.70	5/16"-18UNCX3/8"	2
L099	1	2.531	2.835	0.650	1.071	-	-	2.50	5/16"-18UNCX3/8"	2
L100	1	2.531	3.459	0.660	1.368	-	-	3.40	5/16"-18UNCX3/8"	2
L110	1	3.313	4.252	0.843	1.706	-	-	6.40	3/8"-16UNCX5/16"	2
L150	1	3.750	4.500	0.940	1.771	-	-	8.90	3/8"-16UNCX1/2"	2
L190	2	4.500	5.250	0.875	2.134	1.340	4	8.75	1/2"-13UNCX1/2"	2
L225	2	5.000	6.142	0.942	2.500	1.733	4.25	12.25	1/2"-13UNCX1/2"	2

Spiders - Buna-N (Rubber), Hytrel, Urethane, Bronze

Catalog Number

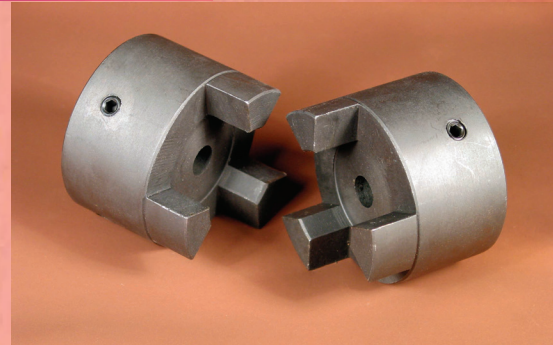
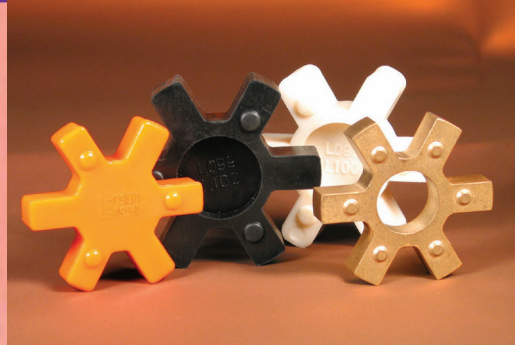
Buna-N	Hytrel	Urethane	Bronze
L035N			
L050N	L050H	L050U	L050B
L070N	L070H	L070U	L070B
L075N	L075H	L075U	L075B
L090N	L090H	L090U	L090B
L095N	L095H	L095U	L095B
L099N	L099H	L099U	L099B
L100N	L100H	L100U	L100B
L110N	L110H	L110U	L110B
L150N	L150H	L150U	L150B
L190N	L190H	L190U	L190B
L225N	L225H	L225U	L225B

Note:

Jaw Coupling Selection can be found in our Master Catalog.

JAW COUPLINGS

Cast Iron Jaw Couplings...Strong, Durable, Better!



MasterDrive® Jaw Couplings

- All couplings standard industry interchangeable
- Inserts come in buna -NBR, hytrel, urethane, and bronze
- Jaw coupling sizes L035 to L225
- Stocked in inch and metric sizes
- Most bore sizes can be re-bored and broached in our machine shop in WI.

WE PROUDLY STAND BEHIND ALL OF OUR PRODUCTS.

MASTERDRIVE®
POWER TRANSMISSION PRODUCTS

Toll Free Phone (888) 922-8767
Phone (920) 563-5838 Fax (920) 563-5650
e-mail: orders@masterdrives.com web site: masterdrives.com