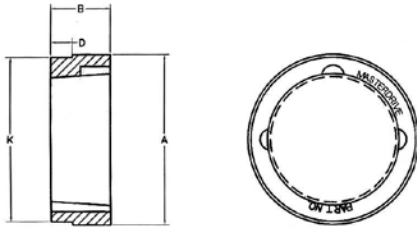


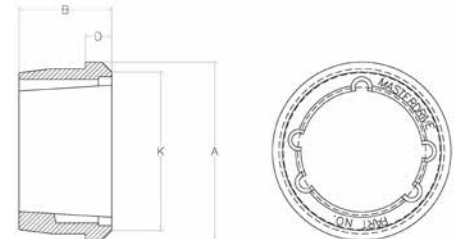
Weld-On Hubs



S Style TB Bushing Weld-On Hubs

S Style Weld-On Hub Dimensions						Thread Dia.
HUBS	Bushing	A	B	D	K	
S16-4	1610	3.000	1.000	0.275	2.875	3/8-16
S16-6	1610	3.000	1.000	0.450	2.875	3/8-16
S20-6	2012	3.563	1.250	0.450	3.438	7/16-14
S20-8	2012	3.593	1.250	0.570	3.438	7/16-14
S25-6	2517	4.250	1.750	0.450	4.125	1/2-13
S25-8	2517	4.250	1.750	0.565	4.125	1/2-13
S25-10	2517	4.250	1.750	0.685	4.125	1/2-13
S25-16	2517	4.250	1.750	1.090	4.125	1/2-13
S30-10	3020	5.250	2.000	0.675	5.125	5/8-11
S30-16	3020	5.250	2.000	1.090	5.125	5/8-11
S35	3535	6.500	3.500	1.160	6.375	1/2-13

TB BUSHING WELD-ON HUBS



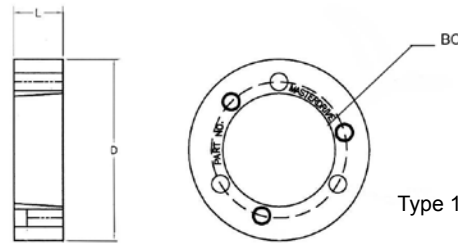
W Style TB Bushing Weld-On Hubs

W Style Weld-On Hub Dimensions						Thread Dia.
HUBS	Bushing	A	B	D	K	
W12	1215	2.875	1.500	0.625	2.500	3/8-16
W16	1615	3.250	1.500	0.625	2.875	3/8-16
W25	2517	4.875	1.750	0.750	4.375	1/2-13
WA30	3030	5.500	3.000	0.750	5.125	5/8-11
WA35	3535	6.750	3.500	1.000	6.250	1/2-13
WA40	4040	7.750	4.000	1.000	7.250	5/8-11
WA45	4545	8.750	4.500	1.000	8.000	3/4-10
WA50	5050	9.500	5.000	1.000	8.750	7/8-9

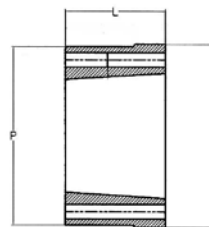
QD BUSHING WELD-ON HUBS

QD Weld-On Hub Dimensions					Thread Dia.
HUBS	D	L	BC	Type	
JA-A	2.250	0.563	1.656	1	10-24
SH-A	3.000	0.813	2.250	1	1/4-20
SDS-A	3.500	0.750	2.688	1	1/4-20
SK-A	4.375	1.250	3.313	1	5/16-18
SF-A	5.000	1.250	3.875	1	3/8-16
E-A	6.250	1.625	5.000	1	1/2-13
F-A	7.000	2.500	5.625	1	9/16-12
J-A	7.750	3.188	6.250	1	5/8-11

QD Weld-On Hub Dimensions				Thread Dia.	
HUBS	D	L	P		
M-A	9.50	5.188	9.250	2	3/4-10
N-A	10.50	6.250	10.250	2	7/8-9



Type 1

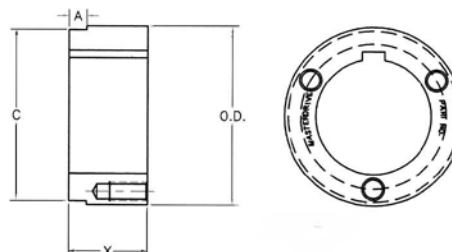


Type 2

Can only be mounted from one direction.

DST BUSHING WELD-ON HUBS

DST Style Weld-On Hub Dimensions					Thread Dia.
HUBS	O.D	A	C	X	
HG1	2.00	0.174	1.875	0.625	1/4-20
HH1	2.50	0.174	2.375	0.875	1/4-20
HCH1	2.50	0.625	2.375	0.875	1/4-20
HP1	3.00	0.292	2.875	1.313	5/16-18
HCP1	3.00	1.000	2.875	1.313	5/16-18
HP2	3.00	1.100	2.875	2.313	5/16-18
HQ1	4.50	0.709	4.375	1.750	3/8-16
HCQ1	4.50	1.250	4.375	1.750	3/8-16
HQ2	4.50	1.606	4.375	2.750	3/8-16
HR1	5.75	0.709	5.625	2.000	3/8-16
HR2	5.75	1.606	5.625	4.000	3/8-16



All sizes made out of **Low Carbon Steel**.